

SECTION A-A

Refer to <http://www.planetklx.com/techtips/kx-to-klx-forkswap.shtml> for more details, instructions and photos.

**APPLICATION NOTES:**

ADAPTING 1994 KX250 FRONT FORKS ( $\phi$ 43mm) ONTO THE KLX300.

RETAINS THE KLX300 STOCK FRONT AXLE & WHEEL.

KX FORK TUBES BOLT INTO KLX TRIPLE CLAMPS.

RETAIN THE STOCK STEERING GEOMETRY BY SHORTENING THE KX FORKS BY 1.25" (31.75mm) BY INSERTING FORK SPACER (-0001), ONE PER TUBE.

USE KLX300 STOCK LENGTH FORK SPRINGS.

**PARTS REQUIRED**

- Qty 2 : Fork Spacer -0001
- Qty 1 : Left Axle Spacer -0002
- Qty 1 : Right Axle Spacer -0003

DIMENSIONS ARE IN INCHES  
[MILLIMETERS IN BRACKETS]

CAD GENERATED DRAWING,  
DO NOT MANUALLY UPDATE

DO NOT SCALE DRAWING

NAME	e-MAIL		DATE
AUTHOR: Bruce Brazil	ibrew@sbcglobal.net		May 27, 2006
DRAWN: Adam Reif	1adam12@designmassif.com		May 27, 2006
<b>NON-PROPRIETARY</b> THE INFORMATION CONTAINED IN THIS DRAWING IS FOR THE EXPLICIT USE OF ALL KLX RIDERS IN THE UNIVERSE. ANY REPRODUCTION IN PART OR AS A WHOLE WITHOUT THE WRITTEN PERMISSION OR CONCENT OF PlanetKLX IS ENCOURAGED.	UNLESS OTHERWISE SPECIFIED TOLERANCES SHOWN ARE:		
	STANDARD	METRIC	ANGLES
	.X = $\pm$ .050	.X = $\pm$ 1.3mm	$\pm$ 0° 30"
	.XX = $\pm$ .025	.XX = $\pm$ .63mm	
.XXX = $\pm$ .010	.XXX = $\pm$ .25mm		
MATERIAL	ALUMINUM 6061-T6		
FINISH	RMS-63 $\mu$ m [RMS-1.6 $\mu$ m]		
WEIGHT	23 grams		

**Planet KLX**

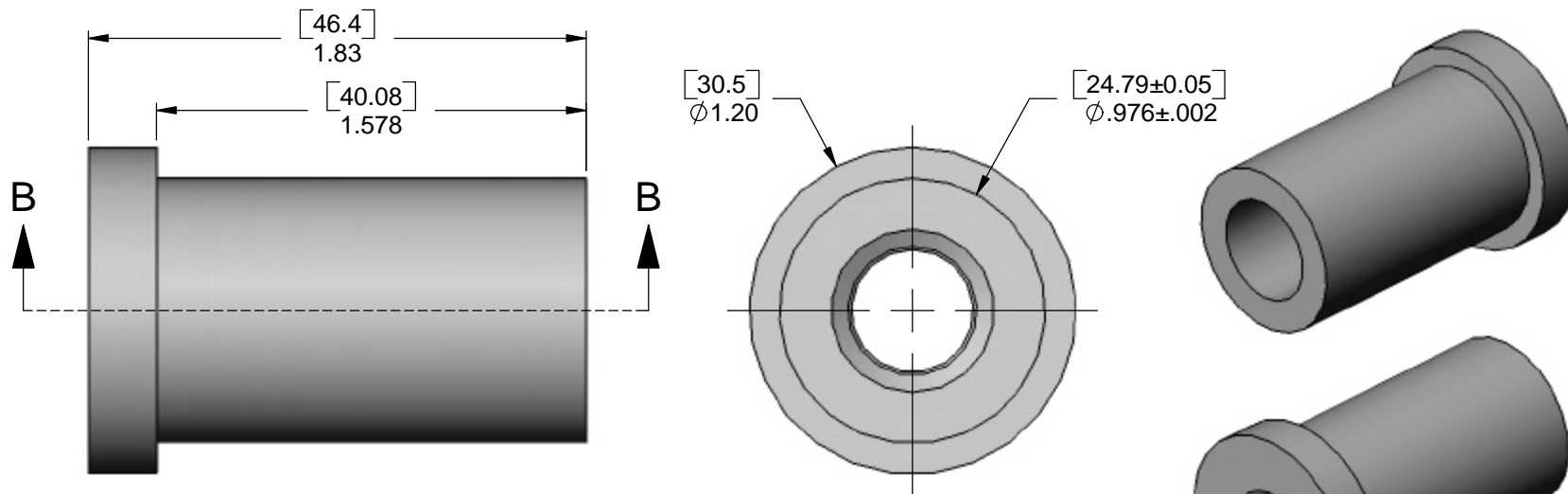
www.planetklx.com

TITLE: **SPACER, FORK**

SIZE	DWG. NO.	REV
<b>A</b>	<b>KLX300-0001</b>	<b>A</b>

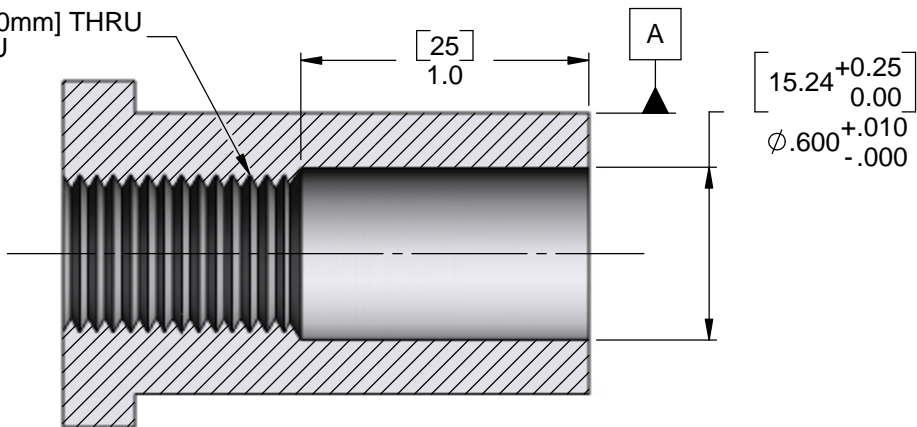
SCALE 3:2

SHEET 1 OF 3



DRILL .492 [ $\phi$  12.50mm] THRU  
TAP M14x1.5 THRU

$\text{Ⓞ}$  .001 [.025] A



SECTION B-B

**NOTE: M14x1.5 TAP AVAILABILITY**

Use-Enco.com P/N 311-4331 \$10  
McMaster.com P/N 26015A251 \$24  
MSC-Direct.com P/N 74990938 \$25

Refer to <http://www.planetklx.com/techtips/kx-to-klx-forkswap.shtml>  
for more details, instructions and photos.

DIMENSIONS ARE IN INCHES  
[MILLIMETERS IN BRACKETS]

CAD GENERATED DRAWING,  
DO NOT MANUALLY UPDATE

DO NOT SCALE DRAWING

NAME	e-MAIL	DATE										
AUTHOR: Bruce Brazil	ibrew@sbcglobal.net	May 27, 2006										
DRAWN: Adam Reif	1adam12@designmassif.com	May 27, 2006										
<p><b>NON-PROPRIETARY</b> THE INFORMATION CONTAINED IN THIS DRAWING IS FOR THE EXPLICIT USE OF ALL KLX RIDERS IN THE UNIVERSE. ANY REPRODUCTION IN PART OR AS A WHOLE WITHOUT THE WRITTEN PERMISSION OR CONCENT OF PlanetKLX IS ENCOURAGED.</p>												
<p>UNLESS OTHERWISE SPECIFIED TOLERANCES SHOWN ARE:</p> <table border="1"> <thead> <tr> <th>STANDARD</th> <th>METRIC</th> <th>ANGLES</th> </tr> </thead> <tbody> <tr> <td>.X = <math>\pm</math> .050</td> <td>.X = <math>\pm</math> 1.3mm</td> <td rowspan="3"><math>\pm</math> 0° 30"</td> </tr> <tr> <td>.XX = <math>\pm</math> .025</td> <td>.XX = <math>\pm</math> .63mm</td> </tr> <tr> <td>.XXX = <math>\pm</math> .010</td> <td>.XXX = <math>\pm</math> .25mm</td> </tr> </tbody> </table>			STANDARD	METRIC	ANGLES	.X = $\pm$ .050	.X = $\pm$ 1.3mm	$\pm$ 0° 30"	.XX = $\pm$ .025	.XX = $\pm$ .63mm	.XXX = $\pm$ .010	.XXX = $\pm$ .25mm
STANDARD	METRIC	ANGLES										
.X = $\pm$ .050	.X = $\pm$ 1.3mm	$\pm$ 0° 30"										
.XX = $\pm$ .025	.XX = $\pm$ .63mm											
.XXX = $\pm$ .010	.XXX = $\pm$ .25mm											
MATERIAL ALUMINUM 6061-T6		WEIGHT 45 grams										
FINISH RMS-63 $\mu$ m [RMS-1.6 $\mu$ m]												

**Planet KLX**

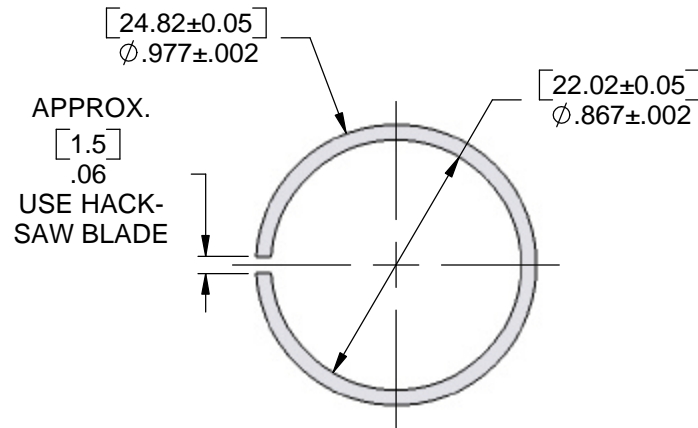
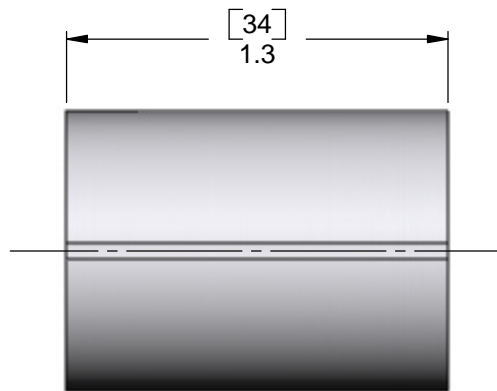
www.planetklx.com

TITLE:  
**AXLE SPACER, LEFT**

SIZE	DWG. NO.	REV
<b>A</b>	<b>KLX300-0002</b>	<b>A</b>

SCALE 3:2

SHEET 2 OF 3



Refer to <http://www.planetklx.com/techtips/kx-to-klx-forkswap.shtml> for more details, instructions and photos.

DIMENSIONS ARE IN INCHES  
[MILLIMETERS IN BRACKETS]

CAD GENERATED DRAWING,  
DO NOT MANUALLY UPDATE

DO NOT SCALE DRAWING

NAME		e-MAIL		DATE		<h1 style="text-align: center;">Planet KLX</h1> <p style="text-align: center;">www.planetklx.com</p>														
AUTHOR: Bruce Brazil		ibrew@sbcglobal.net		May 27, 2006				<b>TITLE:</b> <h2 style="text-align: center;">AXLE SPACER, RIGHT</h2>												
DRAWN: Adam Reif		1adam12@designmassif.com		May 27, 2006																
<p><b>NON-PROPRIETARY</b></p> <p>THE INFORMATION CONTAINED IN THIS DRAWING IS FOR THE EXPLICIT USE OF ALL KLX RIDERS IN THE UNIVERSE. ANY REPRODUCTION IN PART OR AS A WHOLE WITHOUT THE WRITTEN PERMISSION OR CONCENT OF PlanetKLX IS ENCOURAGED.</p>		<p>UNLESS OTHERWISE SPECIFIED TOLERANCES SHOWN ARE:</p> <table border="1"> <thead> <tr> <th>STANDARD</th> <th>METRIC</th> <th>ANGLES</th> </tr> </thead> <tbody> <tr> <td>.X = ± .050</td> <td>.X = ± 1.3mm</td> <td rowspan="3">± 0° 30"</td> </tr> <tr> <td>.XX = ± .025</td> <td>.XX = ± .63mm</td> </tr> <tr> <td>.XXX = ± .010</td> <td>.XXX = ± .25mm</td> </tr> </tbody> </table>		STANDARD	METRIC	ANGLES	.X = ± .050	.X = ± 1.3mm	± 0° 30"	.XX = ± .025	.XX = ± .63mm	.XXX = ± .010	.XXX = ± .25mm	<p>MATERIAL ALUMINUM 6061-T6</p> <p>FINISH RMS-63 µin [RMS-1.6 µm]</p> <p>WEIGHT 9 grams</p>		<table border="1"> <tr> <td>SIZE <b>A</b></td> <td>DWG. NO. <b>KLX300-0003</b></td> <td>REV <b>A</b></td> </tr> </table>		SIZE <b>A</b>	DWG. NO. <b>KLX300-0003</b>	REV <b>A</b>
STANDARD	METRIC	ANGLES																		
.X = ± .050	.X = ± 1.3mm	± 0° 30"																		
.XX = ± .025	.XX = ± .63mm																			
.XXX = ± .010	.XXX = ± .25mm																			
SIZE <b>A</b>	DWG. NO. <b>KLX300-0003</b>	REV <b>A</b>																		
				SCALE 3:2		SHEET 3 OF 3														